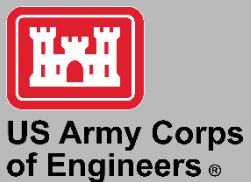


**DESIGN-BUILD CONSTRUCT ARS/WSU
PLANT BIOSCIENCES RESEARCH
BUILDING (PBRB), WASHINGTON STATE
UNIVERSITY, PULLMAN, WA**

**AGRICULTURAL RESEARCH SERVICE
US DEPARTMENT OF AGRICULTURE**

WASHINGTON STATE UNIVERSITY

Presenter
Rebekah Barker, Bruce Okumura
Seattle District, US Army Corps of Engineers
Date: 07 Dec 2021



**Agricultural
Research
Service**



AGRICULTURAL RESEARCH SERVICE

The **Agricultural Research Service (ARS)** is the U.S. Department of Agriculture's chief scientific in-house research agency. Their job is finding solutions to agricultural problems that affect Americans every day from field to table.

One way they do this is through partnering. ARS scientists frequently collaborate with research partners from universities, companies, other organizations, and other countries.



**Agricultural
Research
Service**



WASHINGTON STATE UNIVERSITY

The U.S. Department of Agriculture (USDA) Agricultural Research Service (ARS) and Washington State University (WSU) have a long-standing history of joint research dating back to 1931 which has been noted as one of the strongest federal-state partnerships in the nation.

Washington State University researchers untangle complex problems to enrich quality of life for us all.



WASHINGTON STATE
UNIVERSITY



U.S. ARMY

LOCATION: STATE OF WASHINGTON





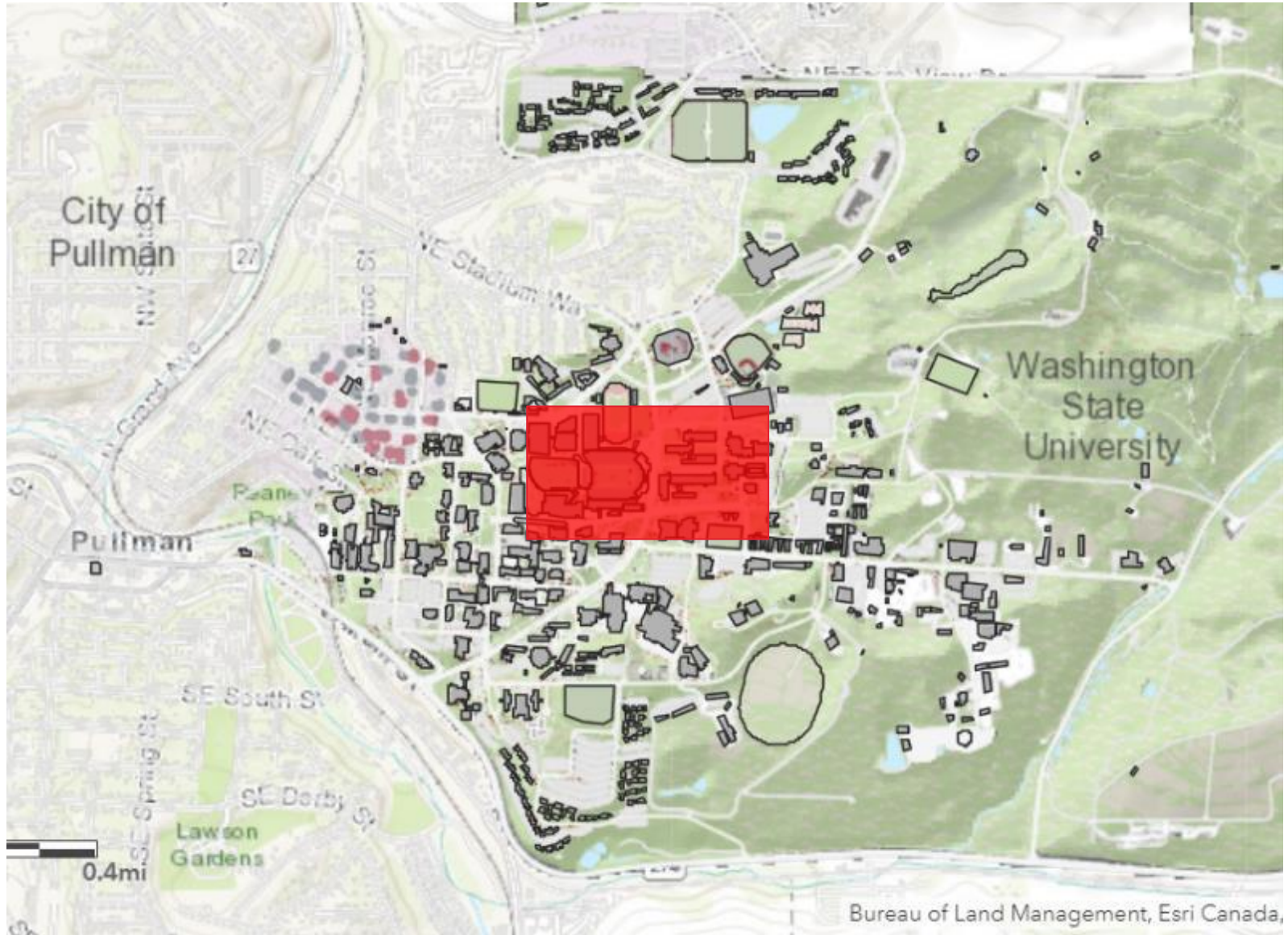
LOCATION: PULLMAN, WA





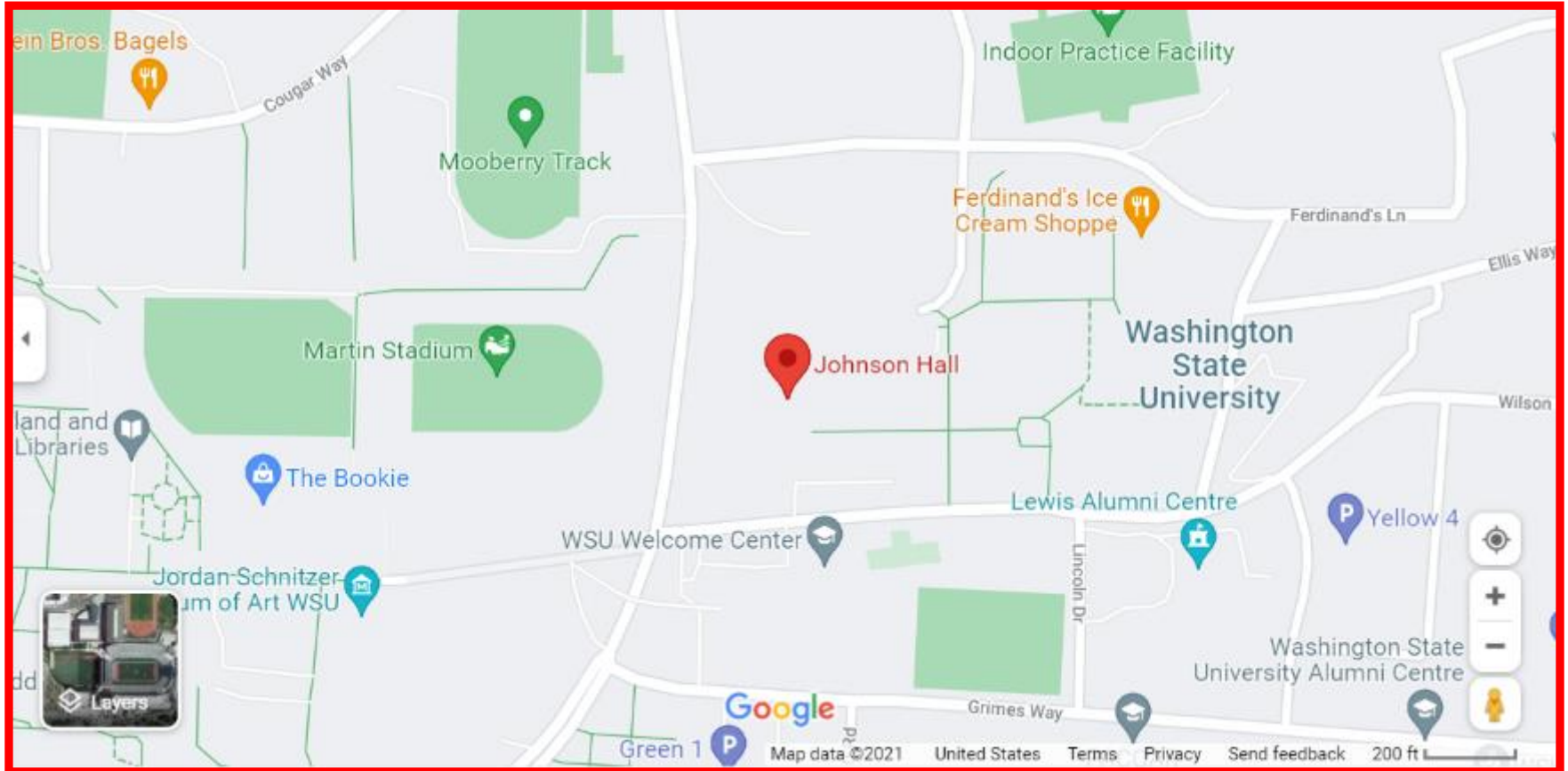
U.S. ARMY

LOCATION: WASHINGTON STATE UNIVERSITY





LOCATION: JOHNSON HALL





LOCATION: RESEARCH EDUCATION COMPLEX





SCOPE: DESIGN-BUILD CONTRACT



Design and construction services for a new ARS/WSU Plant Biosciences Research Building (PBRB) is located on the Washington State University (WSU) campus, located within the **Research Education Complex (REC)**.

Site: 1-2 acres to be developed with supporting infrastructure utilities, paved surfaces, site lighting and landscaped areas

Building: maximum 113,703 GSF (per calculations as outlined in UFC 3-101-02) and shall provide research and office space representing a diverse mix of disciplines, programs, and groups of approximately 320 researchers and students.



SCOPE



Facilities: The building provides key connections within the REC complex with a direct connection to the Vogel Plant Sciences building to the west, providing office space for researchers with labs in Vogel.

The laboratories required to support the important research missions range from typical Micro/Molecular Biology laboratories to Plant/Soil focused laboratories and other specific research-focused labs as well as many proposed shared research support laboratories.



SCOPE



Research programs include Hatch Projects (HP) which are comprised of both ARS and WSU scientists with each researcher focusing on a different part of a common research goal.

The HP to be housed within the new PBRB are the following:

HP1 – Integrated Crop & Weed Management Systems

HP2 – Reducing the Impact of Pests & Diseases Affecting Washington Agriculture

HP3 – Molecular Plant Sciences: Plant Productivity in a Dynamic Environment

HP4 – Enhancing Sustainability Across Agricultural Systems

HP5 – Crop Improvement & Sustainable Production Systems

HP6 – Soil-Plant Interactions: Chemical, Physical & Biological Processes



SPECIAL REQUIREMENTS/CONSIDERATIONS



Design laboratories utilizing a Laboratory Typology Approach which utilizes a flexible and modular approach to allow space to change and adapt with the needs of the research groups over time.

The adjacent Vogel and Plant Sciences buildings (REC5) must remain operational during construction with limited impact to existing building occupants where demolition is required to achieve the desired building connections.

Achieve goals outlined by the ARS Policy and Procedure for Energy, Water and Sustainability, achieve minimum LEED Silver certification, respond to the Washington Energy Executive Order 20-01 for state efficiency and environmental performance and provide a healthy environment for all building occupants.



OTHER REQUIREMENTS



Goals for the project include the following:

- Connectedness to Vogel Plant Sciences building
- Utilize a modular lab approach and respond to post COVID-19 environment with some separation between labs, maintaining visual openness
- Flexibility within the labs to eliminate significant renovations as needs change
- Offices for everyone in Vogel who currently have offices in Johnson Hall
- Appropriate area within the building for dirty soils processing work to be conducted
- Effective loading and delivering of material in concert with existing facilities with the acknowledgment that these researchers require large soil deliveries



DESIGN-BUILD CONTRACT



Design-Build Construct ARS/WSU Plant Biosciences Research Building (PBRB), Washington State University, Pullman, WA

- Multi-story
- CCL: \$89M
- Anticipated acquisition strategy (pending approval): 2-Phase Full and Open Best Value Trade-off
- Period of Performance: 910 days
- Scheduled Phase 1 advertisement: Jan 2022
- 35% design provided for bidding



COVID-19: FEDERAL REQUIREMENTS



The supplementary DFARS Clause will be included in the anticipated Solicitation:

1. **CLASS DEVIATION 2021-O0009 – Ensuring Adequate COVID-19 Safety Protocols for Federal Contractors for DFARS Clause 252.223-7999**, ensures contractors comply with all guidance for contractor and subcontractor workplace locations published by the Safer Federal Workforce Task Force at: www.saferfederalworkforce.gov/contractors.
 2. Additional details regarding authority, compliance, and subcontracts of DFARS Clause 252.223-7999 can be found on the Federal Acquisition website at <https://www.acquisition.gov>.
- **Be advised regarding any Site Visit during Phase 2 Solicitation:** Effective August 25, 2021, Federal employees, contractors, and visitors who enter a Federal facility or Site must follow facility signage and requirements, and agency safety protocols, regarding vaccination and testing documentation.



COVID-19 WASHINGTON STATE REQUIREMENTS



On August 9, 2021, pursuant to the governor's emergency powers authorized in **RCW 43.06.220**, Washington Governor Jay Inslee issued **Proclamation 21-14 – COVID-19 Vaccination Requirement**, which was **amended on August 20, 2021, by Proclamation 21-14.1 – COVID-19 Vaccination Requirement** ("Proclamation"). **Effective October 18, 2021, the Proclamation prohibits state agencies from permitting on-site contractors to engage in work for the agency if the personnel performing the contract (including subcontractor personnel) have not been fully vaccinated against COVID-19 as set forth in the Proclamation.** The only two exemptions from the vaccination requirement are if such individual is unable to be vaccinated due to a legitimate medical condition or the requirement conflicts with their sincerely held religious beliefs, practice, or observance (in either case, the Proclamation requires confirmation).

Further information about State COVID requirements can be found here:
<https://wsu.edu/covid-19/contractor-vaccination/>



QUESTIONS?



Slides and a summary of questions and answers will be provided on SAM.gov



U.S. ARMY

POC FOR ADDITIONAL QUESTIONS



Small Business Questions:

Deputy Office of Small Business Programs, Seattle District

John Solomon

(206) 316-3990

John.S.Solomon@usace.army.mil

Project-Specific Acquisition Questions:

Contracting Specialist

Debbie Knickerbocker

(206) 764-6804

Debbie.A.Knickerbocker@usace.army.mil

Note: Industry Day specific questions on this project should be received by end of day Wednesday, December 8, 2021